

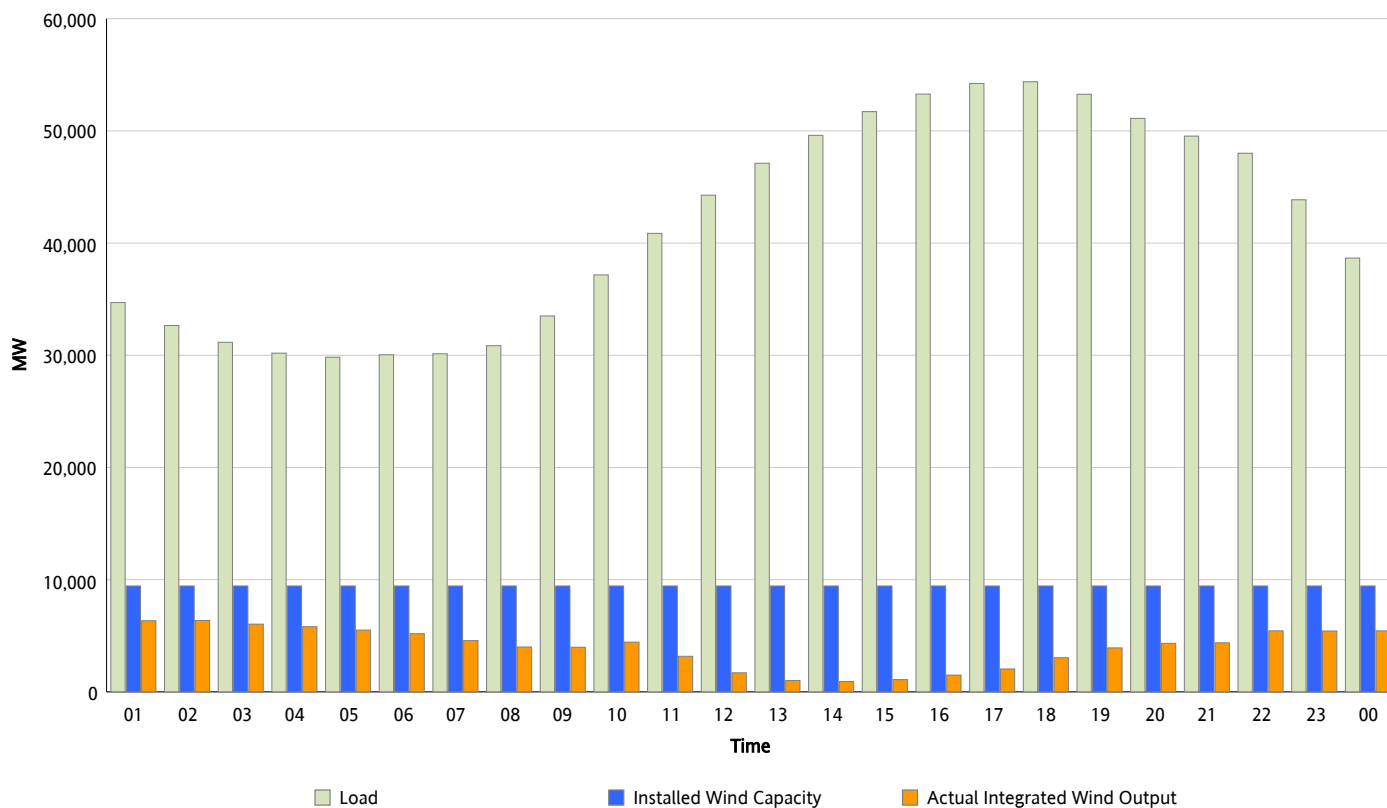


ERCOT Grid Operations

Wind Integration Report : 05/28/2012

Peak Load	54,379 MW
Load Peak Hour (HE)	18
Wind Over Peak	3,046 MW
Wind Record 04/13/12	7,925 MW
Max Wind Value*	6,584 MW
Wind Peak Time	00:17
Wind Integration %	18.68 %

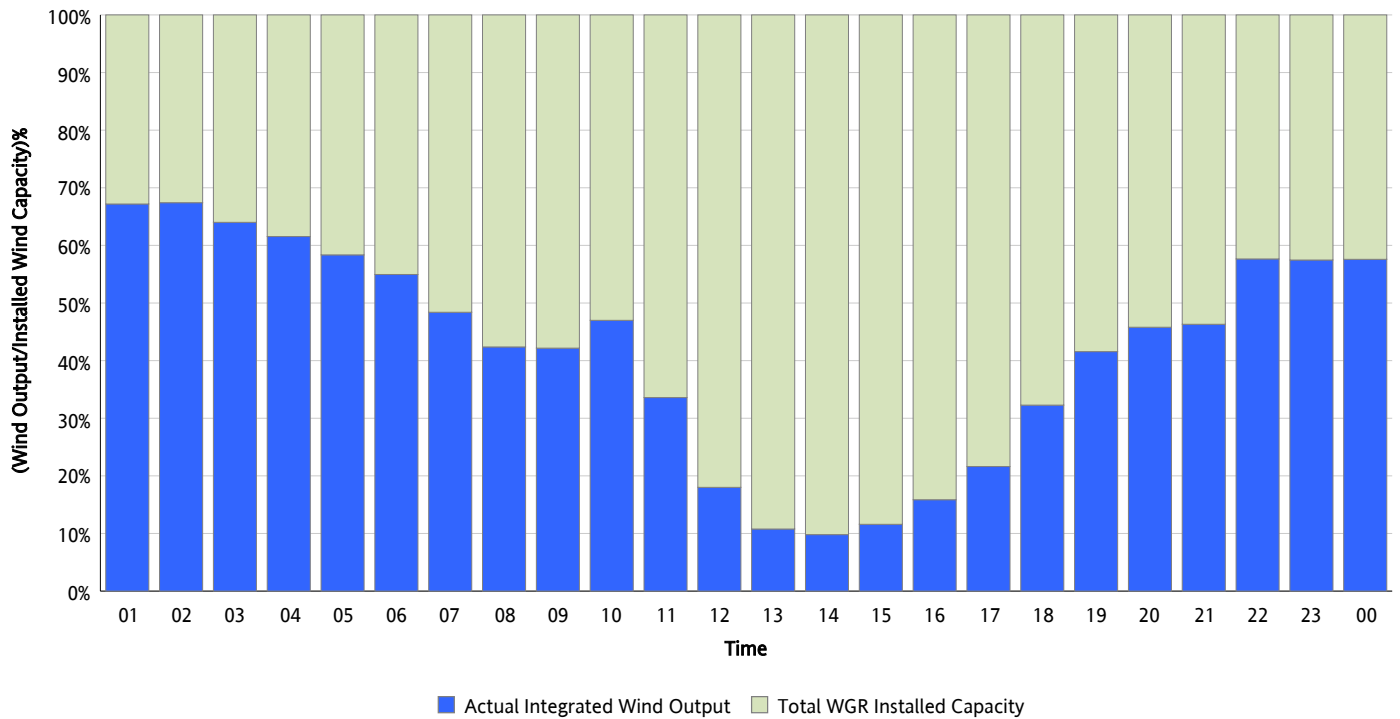
Hourly Average Actual Load vs. Actual Wind Output
05/28/2012



* Wind Record and Wind Max represent instantaneous values and the rest of the values are integrated over the hour

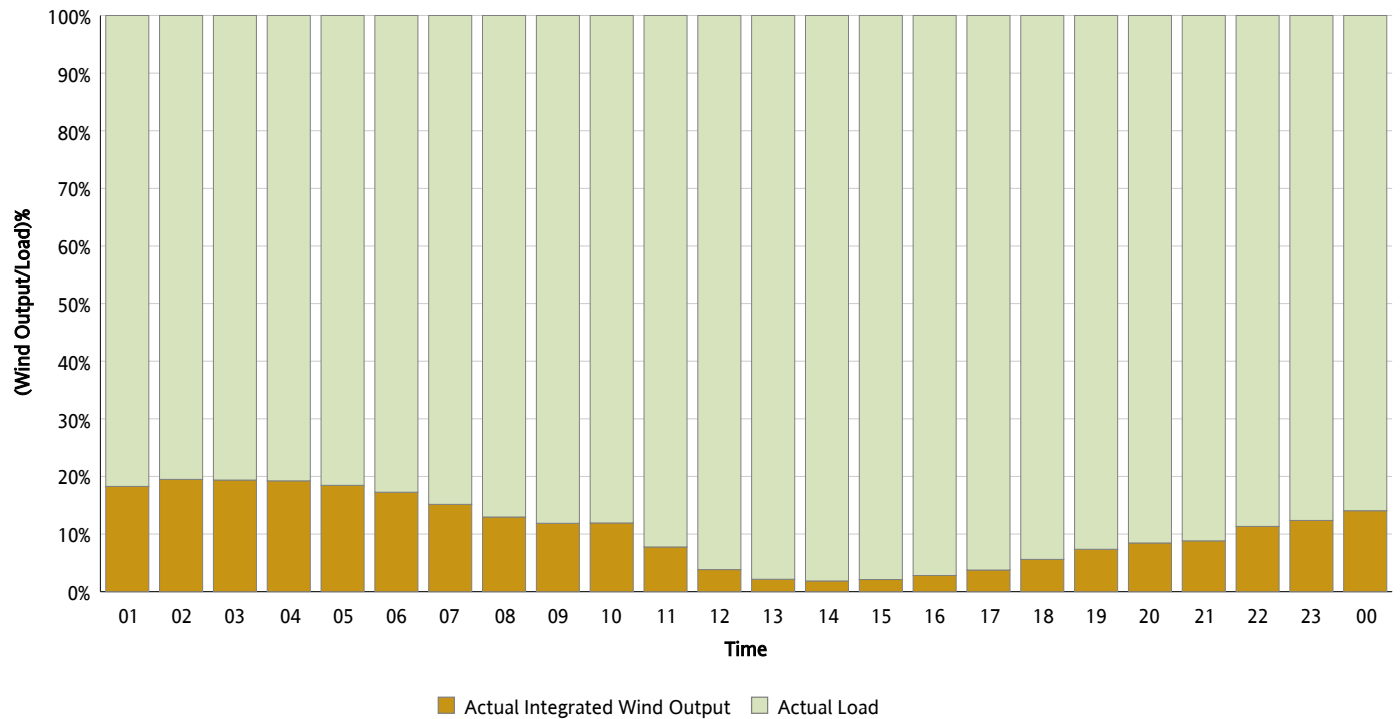
Actual Wind Output as a Percentage of the Total Installed Wind Capacity

05/28/2012



Actual Wind Output as a Percentage of the ERCOT Load

05/28/2012



ERCOT Load vs. Actual Wind Output

05/21/2012 - 05/28/2012

